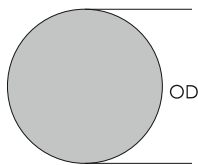


# PTFE Rod

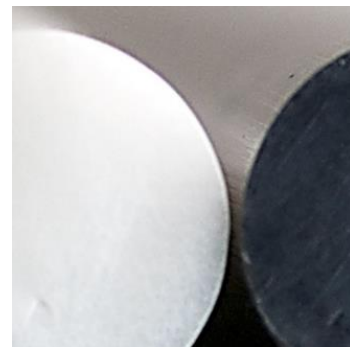
## Metric Rod



**KEY**  
OD – Outside Diameter

<b>Material</b>	PTFE - Polytetrafluoroethylene (CF <sub>2</sub> ) <sup>n</sup>
<b>Applicable Standards</b>	BS EN 60684; BS EN ISO 13000
<b>Manufacturer</b>	Grange Tubes LLP
<b>Country of Origin</b>	UK
<b>HS Code</b>	39169050
<b>ECCN</b>	EU99
<b>Shelf Life &amp; Storage</b>	No special requirements

PART CODE	OD mm	Package Random Production Lengths
1.00	1.00 ± .10	Reel
1.50	1.50 ± .10	Reel
2.00	2.00 ± .10	Reel
2.50	2.50 ± .10	Reel
3.00	3.00 ± .10	Reel/Coil
3.50	3.50 ± .10	Coil
4.00	4.00 ± .10	Coil
4.50	4.50 ± .10	Coil
5.00	5.00 ± .10	Coil
5.50	5.50 ± .10	Coil
6.00	6.00 ± .15	Coil
6.50	6.50 ± .15	Coil
7.00	7.00 ± .15	Coil
7.50	7.50 ± .15	Coil
8.00	8.00 ± .15	Coil
8.50	8.50 ± .15	Coil
9.00	9.00 ± .20	Coil
9.50	9.50 ± .20	Coil
10.00	10.00 ± .20	Coil



### APPLICATIONS

PTFE Rod can be machined to make precision components used in a wide range of engineering applications, for example - bushes, filters, plugs etc. Smaller diameters are also used as dummy fillers in cable assemblies.

### SIZE RANGE

We can produce any size of PTFE Rod ranging from 0.8mm (1/32") to 10mm (3/8"), our standard range consists of metric & imperial sizes.

### COLOUR RANGE

PTFE Rod is available in our full colour range.

### PACKAGING

Supplied on reels, in coils or cut to length as appropriate.

### VALUE ADDED SERVICES

Cut lengths.  
Cut pieces.

## PRODUCT COMPLIANCE

### European Regulation (EC) No. 1907/2006 The Registration, Evaluation, Authorisation and Restriction of Chemicals (REACH)

None of the Substances of Very High Concern (SVHC) included in the list of candidates for authorisation published by the European Chemicals Agency are present in concentrations greater than those permitted in any of the products manufactured and supplied by Grange Tubes LLP.

### Directive (EU) 2017/2102 amending Directive 2011/65/EU - The Restriction of the use of certain Hazardous Substances in electrical and electronic equipment – RoHS3

None of the substances restricted by RoHS3 are present in quantities above those permitted within the regulation in any of the products manufactured and supplied by Grange Tubes LLP.

*DISCLAIMER: The information in this Data Sheet is believed to be correct as of the date issued, no warranty is given as to the fitness of the Product for any particular purpose and any implied warranty or condition (statutory or otherwise) is excluded except to the extent that such exclusion is permitted by law. User is responsible for determining whether the product is fit for a particular purpose and suitable for user's method of use or application. Given the variety of factors that can affect the use and application of a product, some of which are uniquely within the user's control, it is essential that the user evaluate the product to determine whether it is fit for a particular purpose and suitable for user's method of use or application. The information is subject to change without notice and replaces all data sheets previously supplied. Liability for loss or damage resulting from any reliance on the Information or use of it (including liability resulting from negligence or where Grange Tubes LLP was aware of the possibility of such loss or damage arising) is excluded. This will not operate to limit or restrict Grange Tubes LLP's liability for death or personal injury resulting from its negligence.*

